



INTRODUCCION A CIENCIAS MORFOLOGICAS

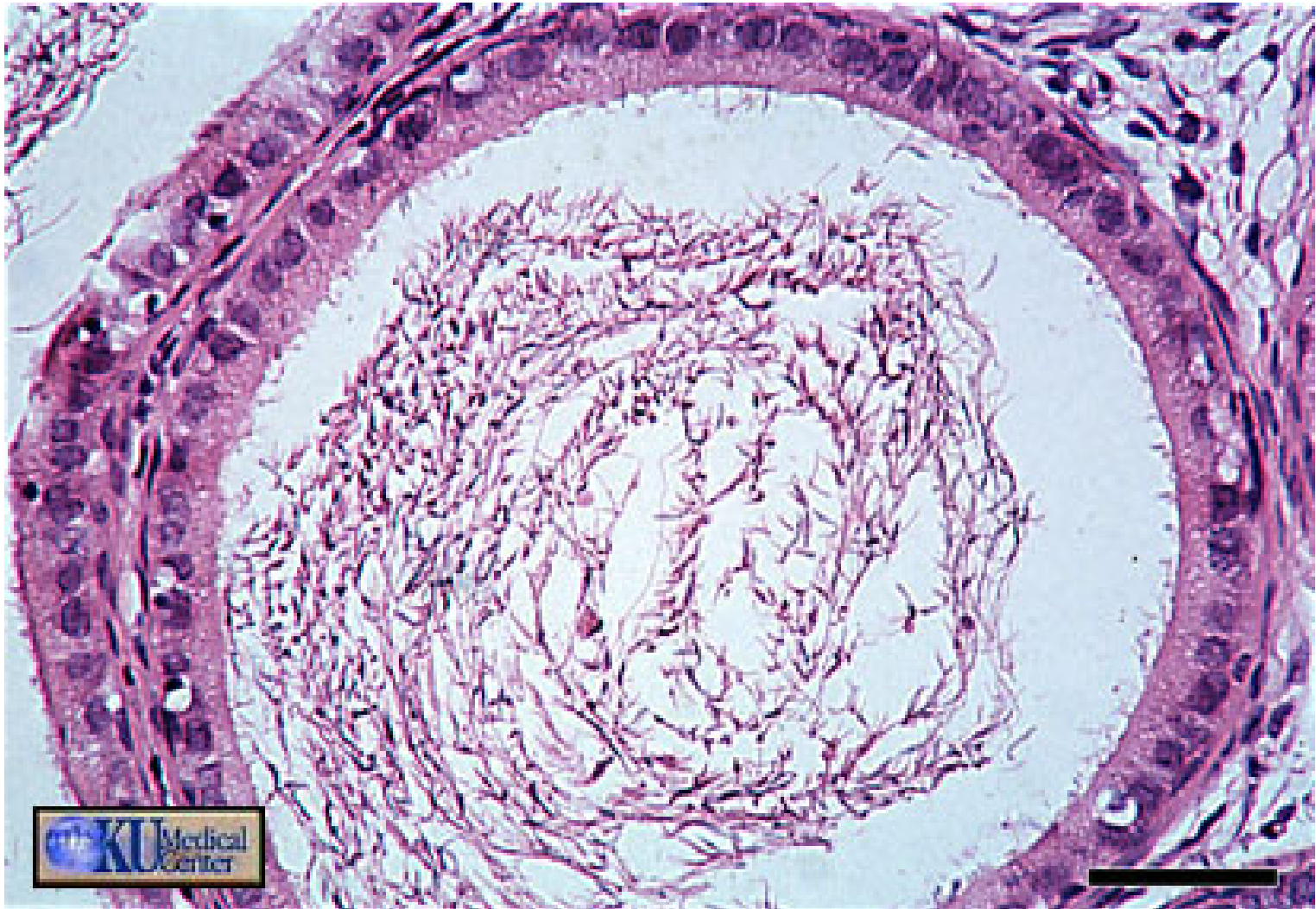
PRACTICA No. 1 "CELULAS GERMINALES"

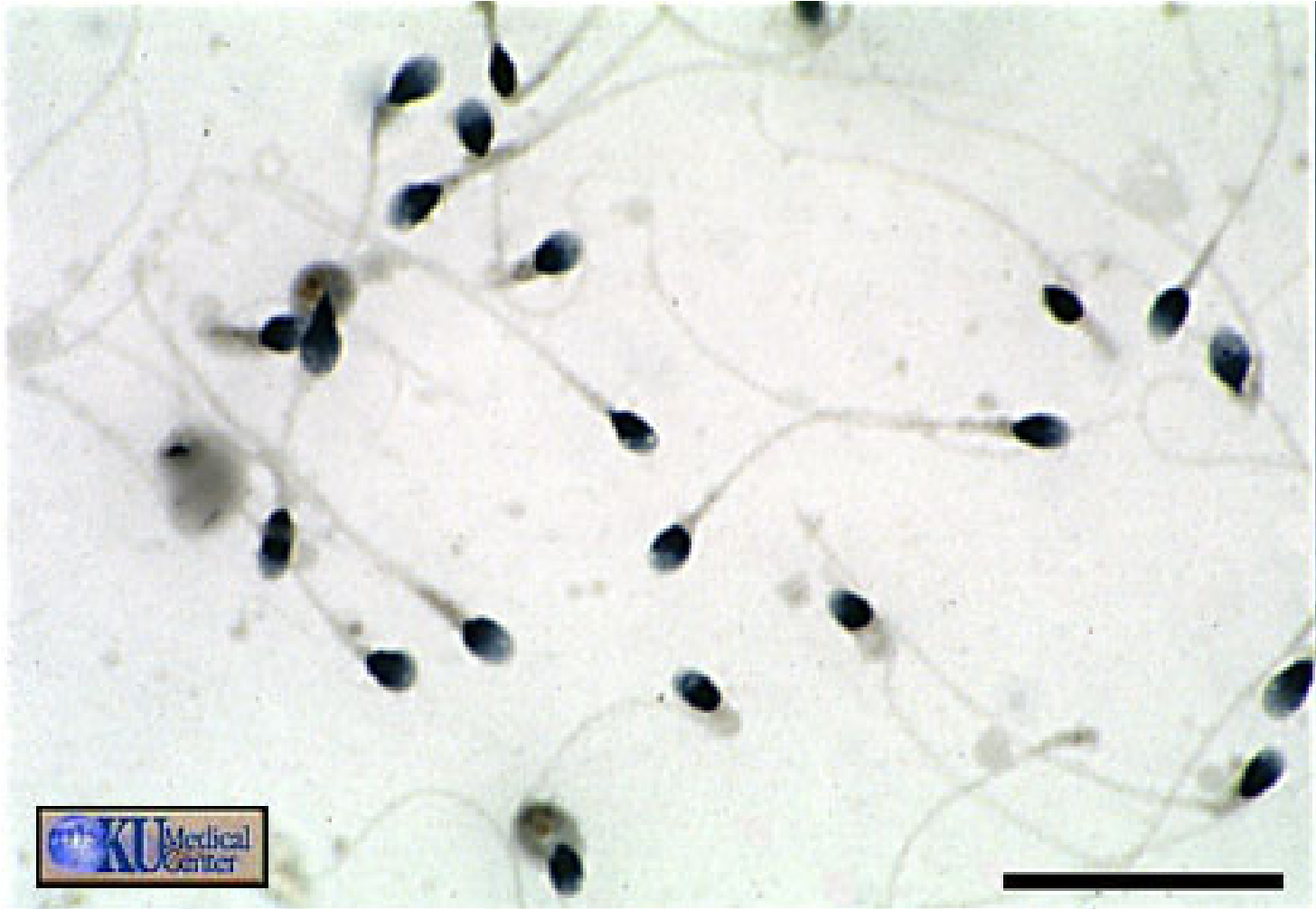




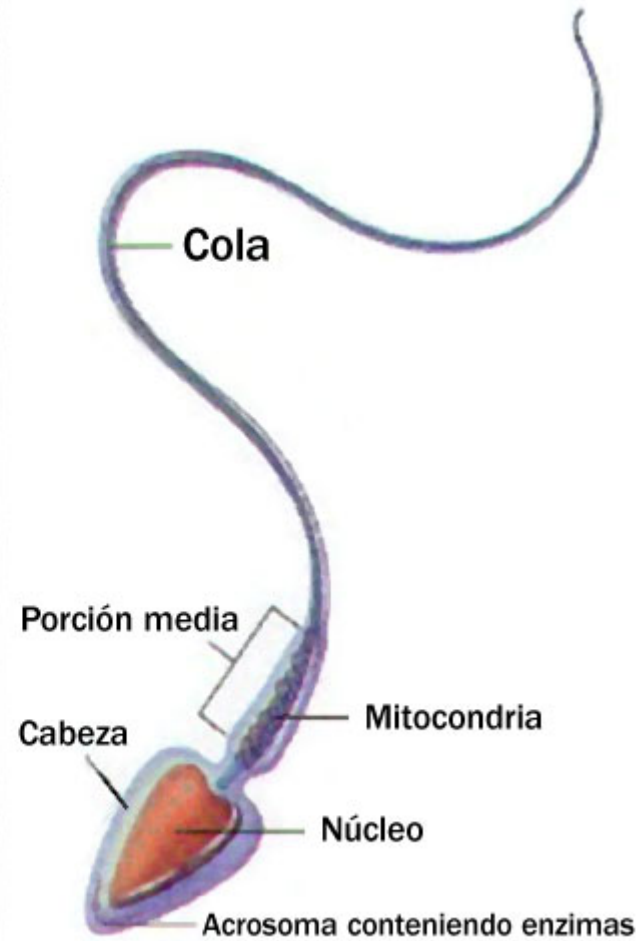
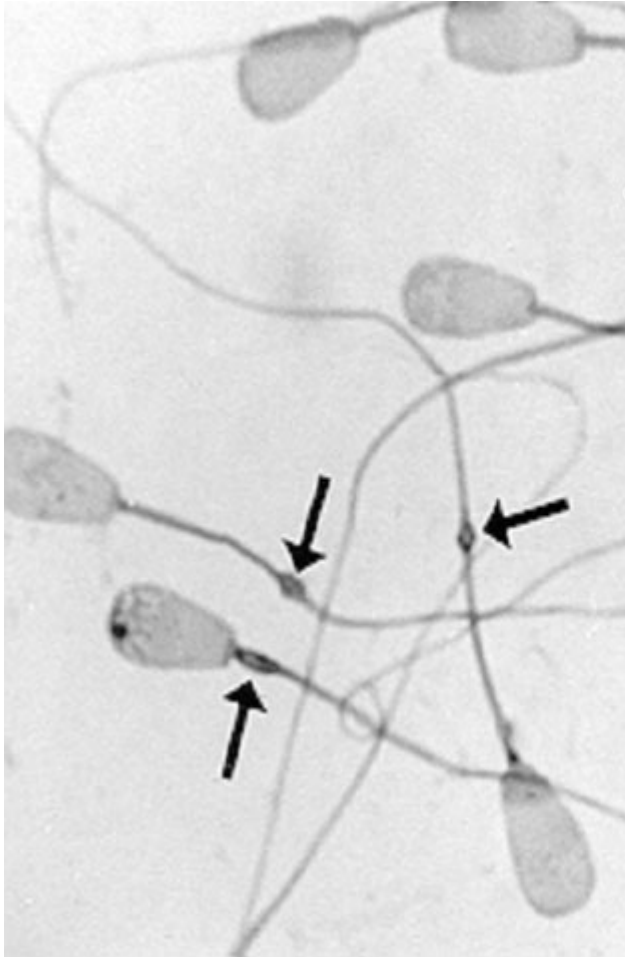








MORFOLOGIA DES ESPERMATOZOIDE

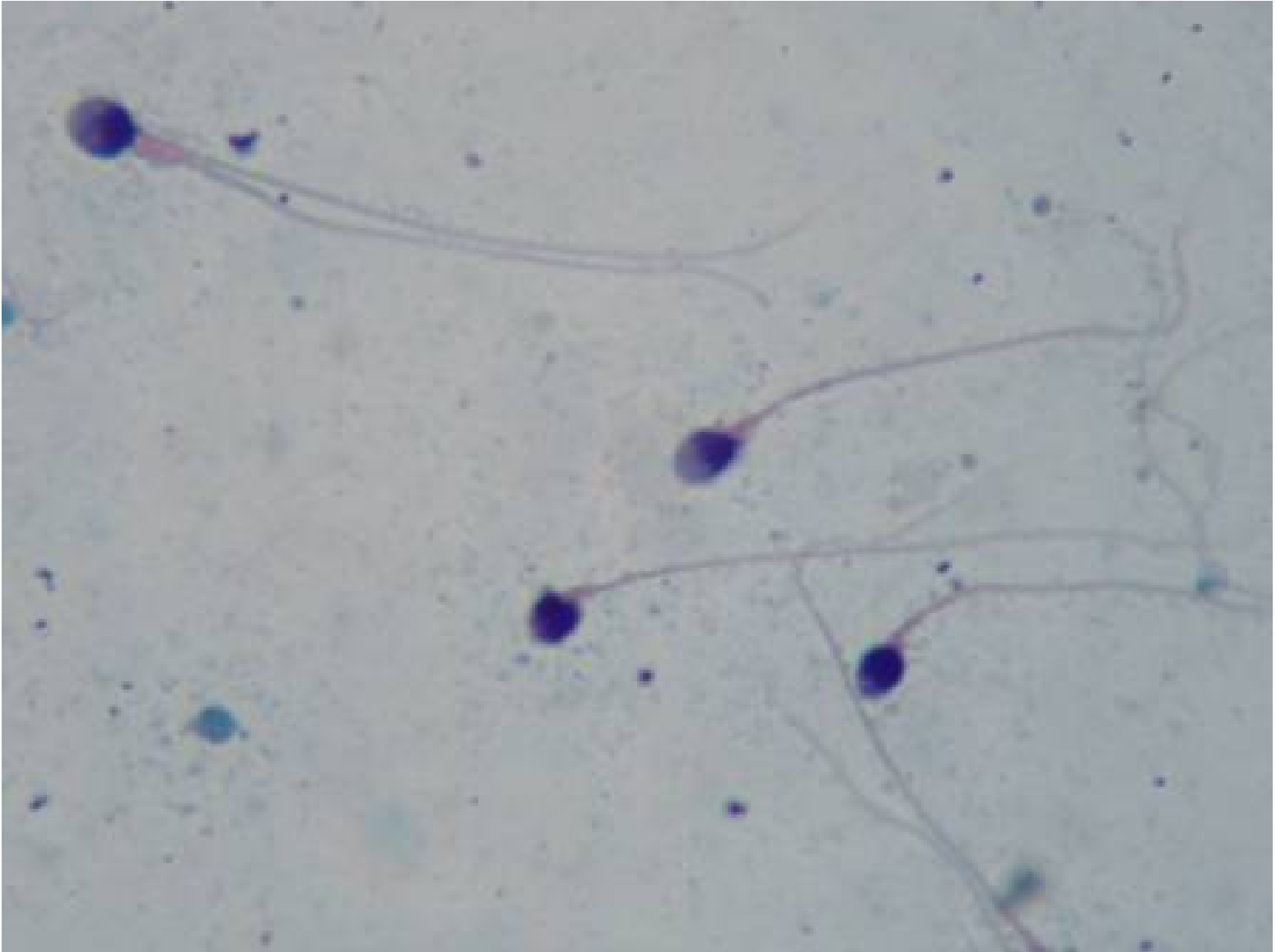




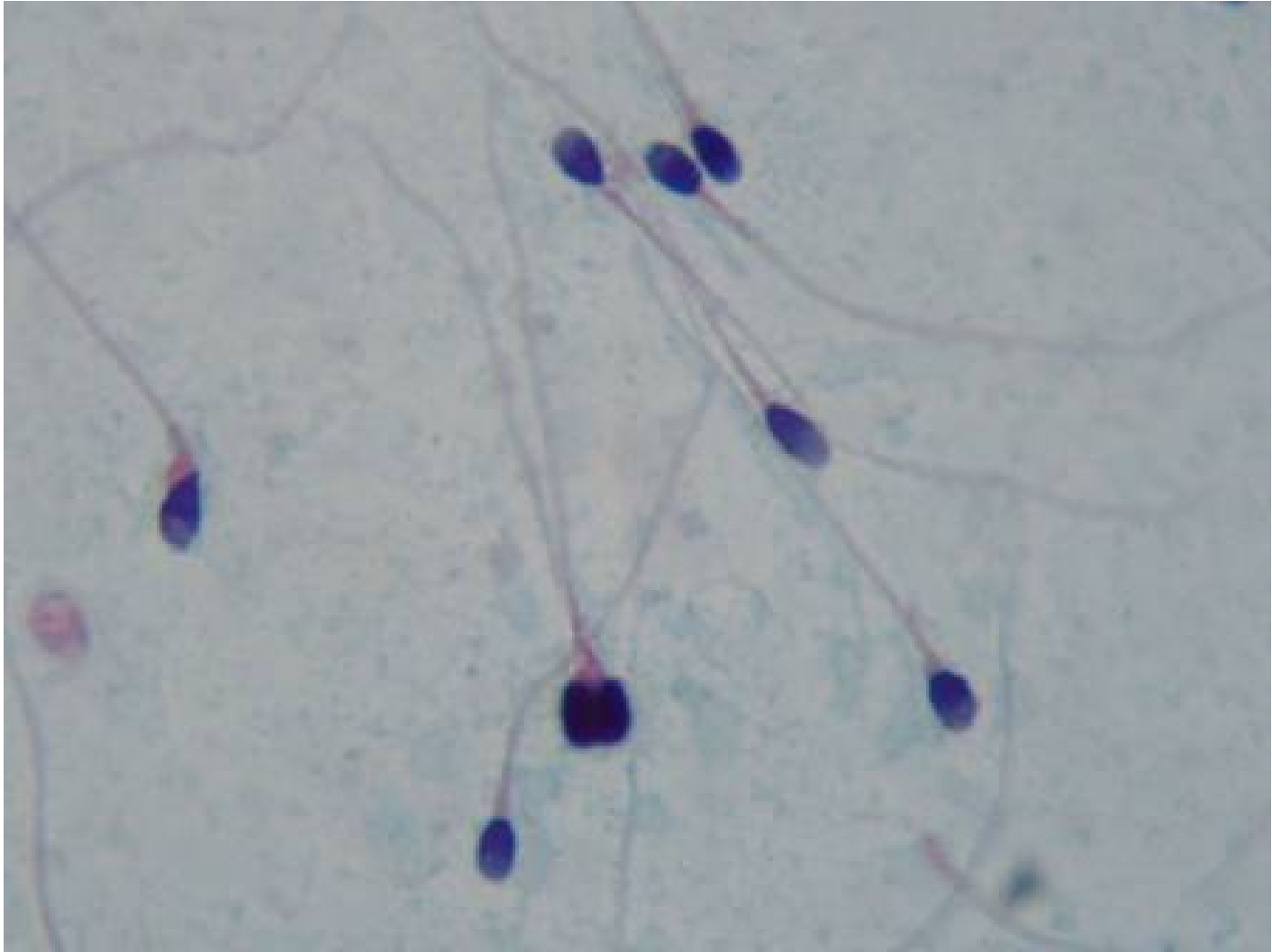
Espermatozoides normales



Esperamatozoides con dos colas



Espermatozoides con dos colas y dos cabezas



Espermatozoides con cola enrollada

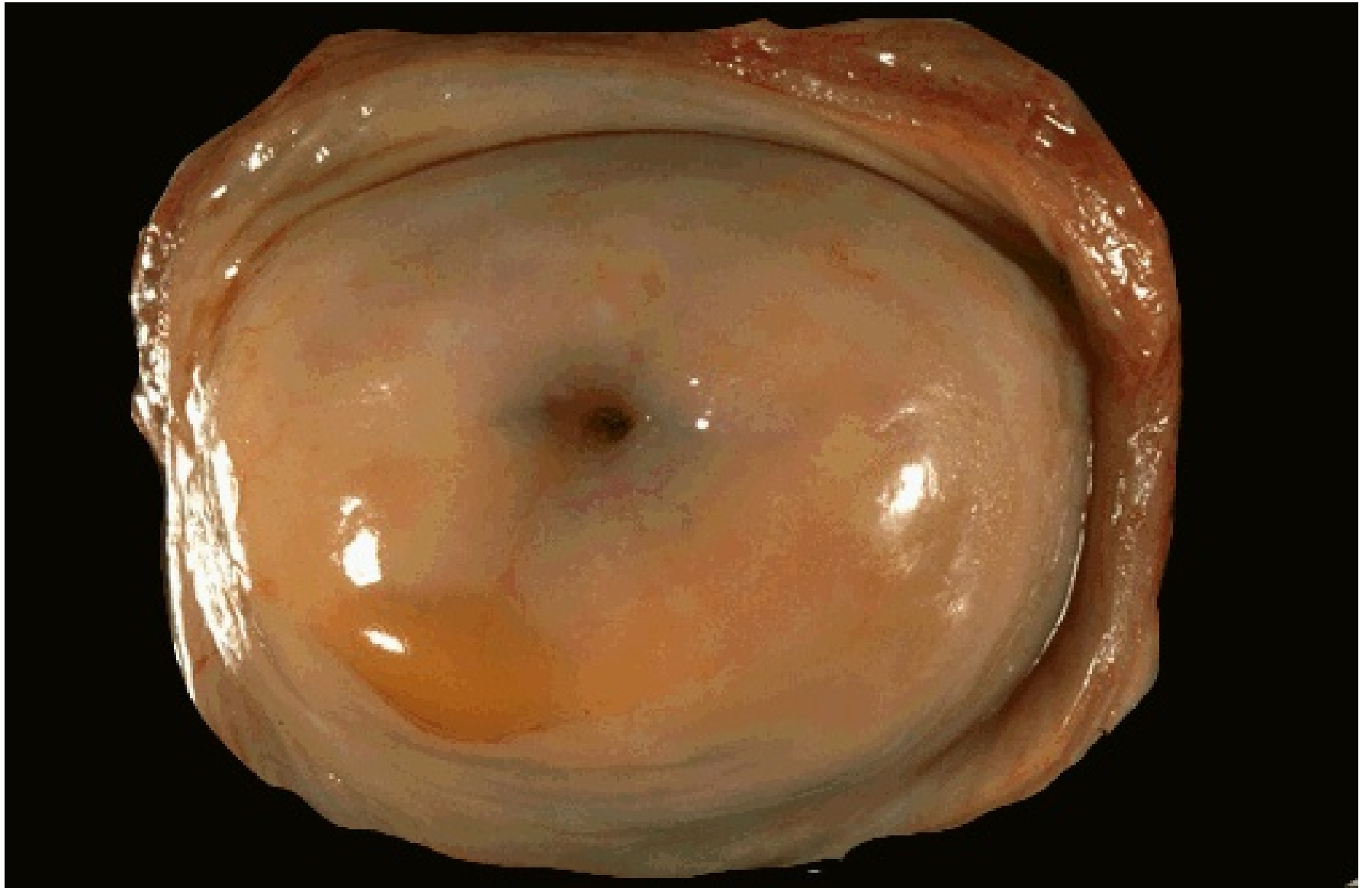


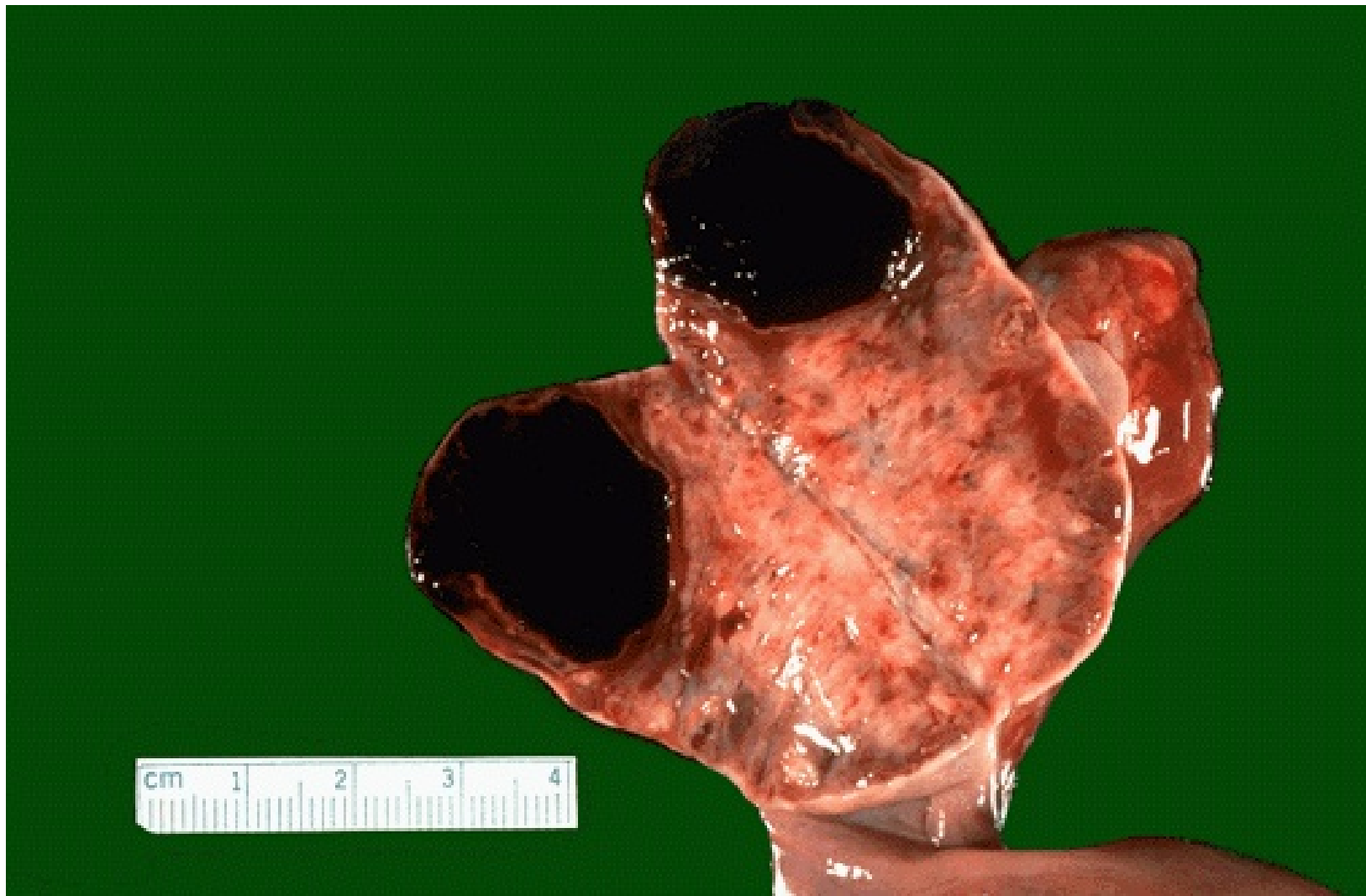
Espermatozoides con cabezas piriformes





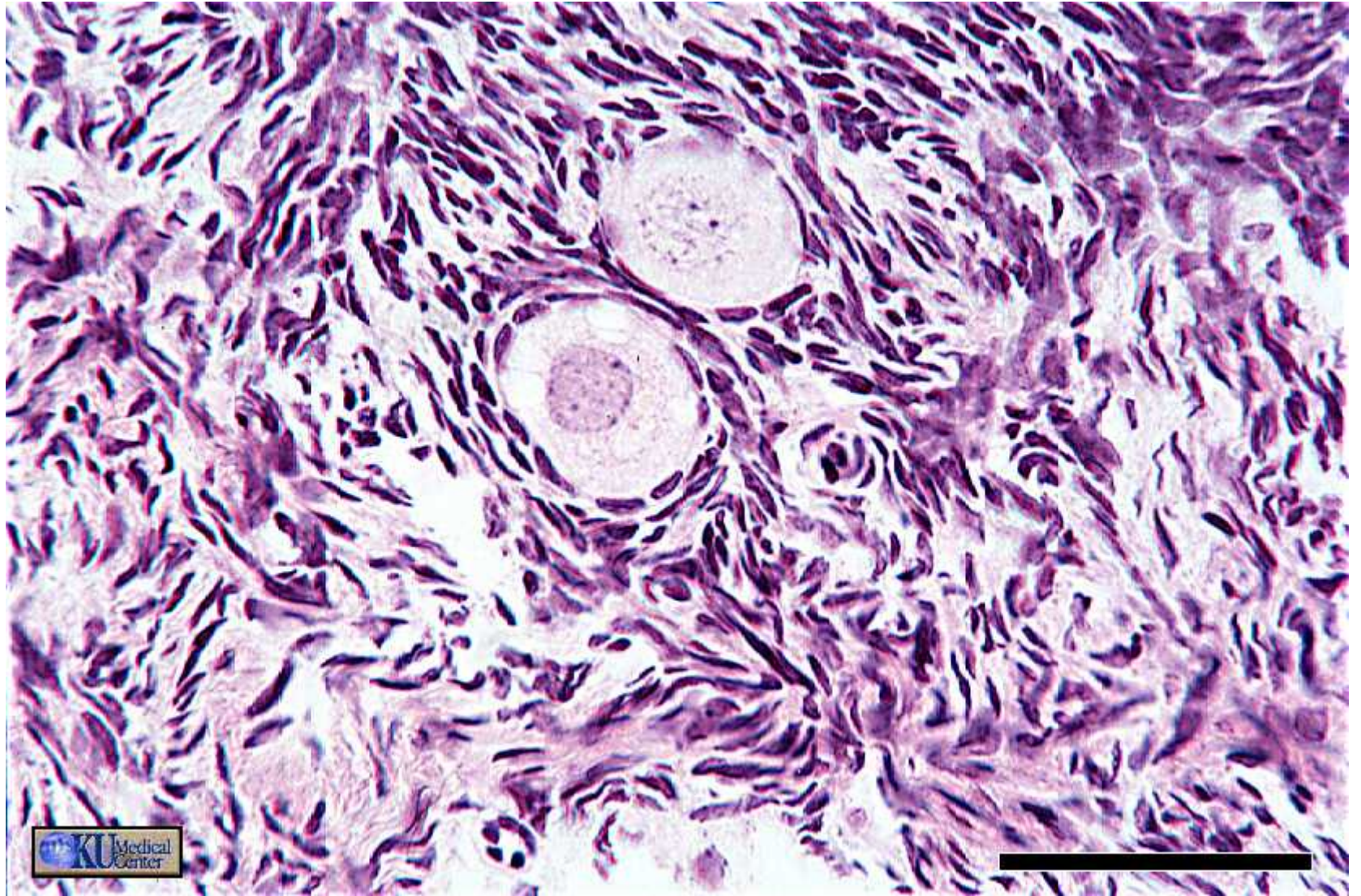


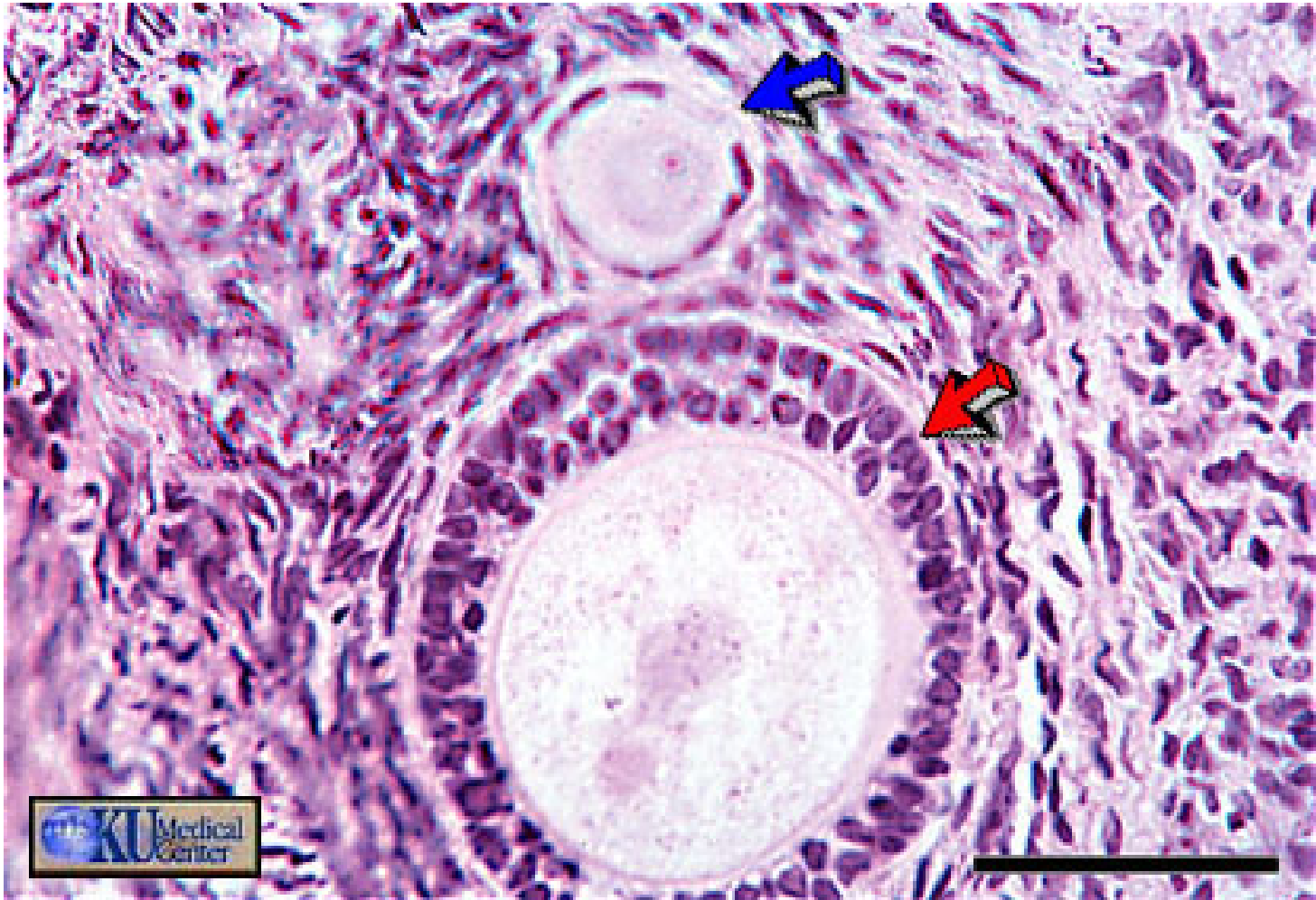


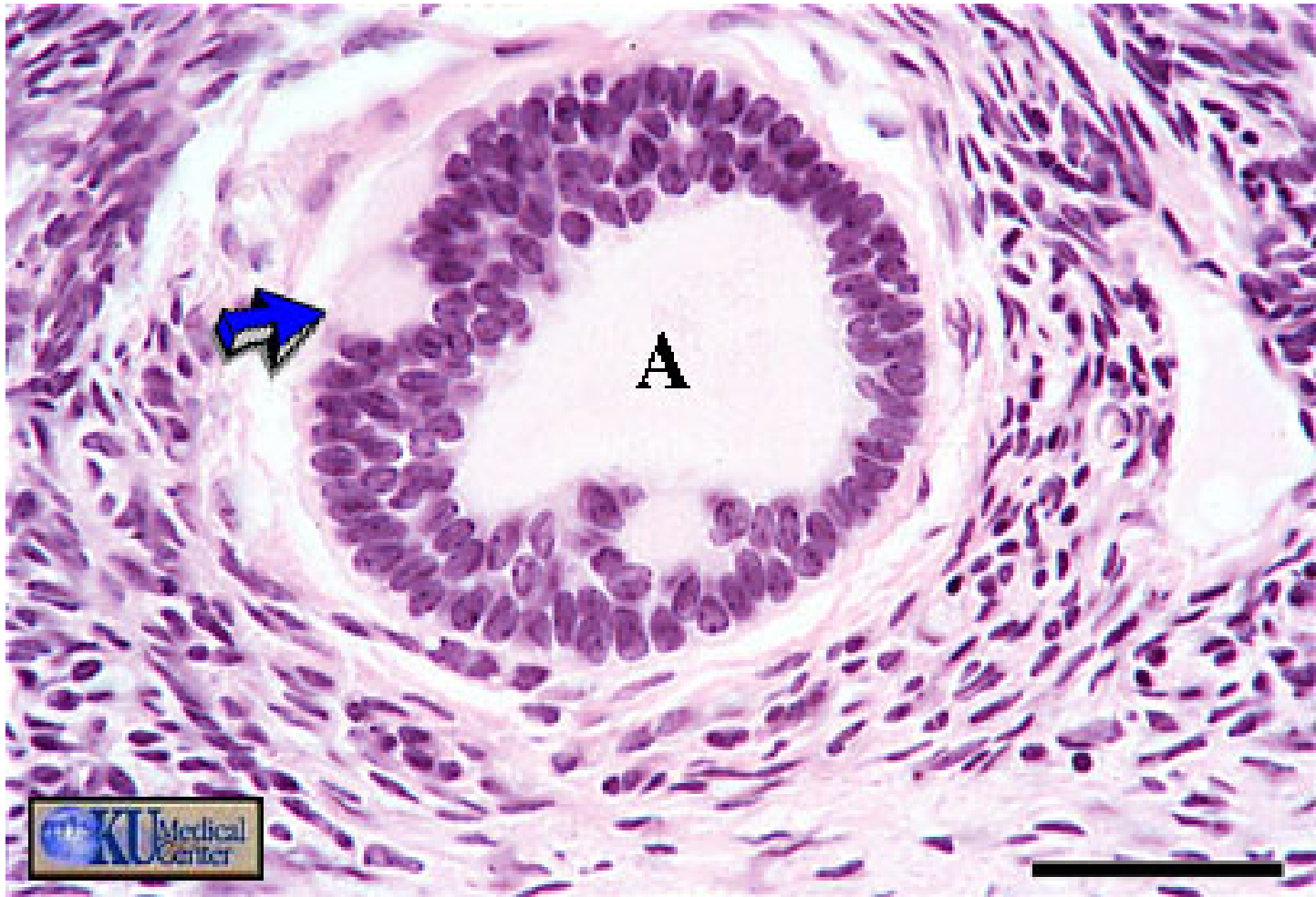


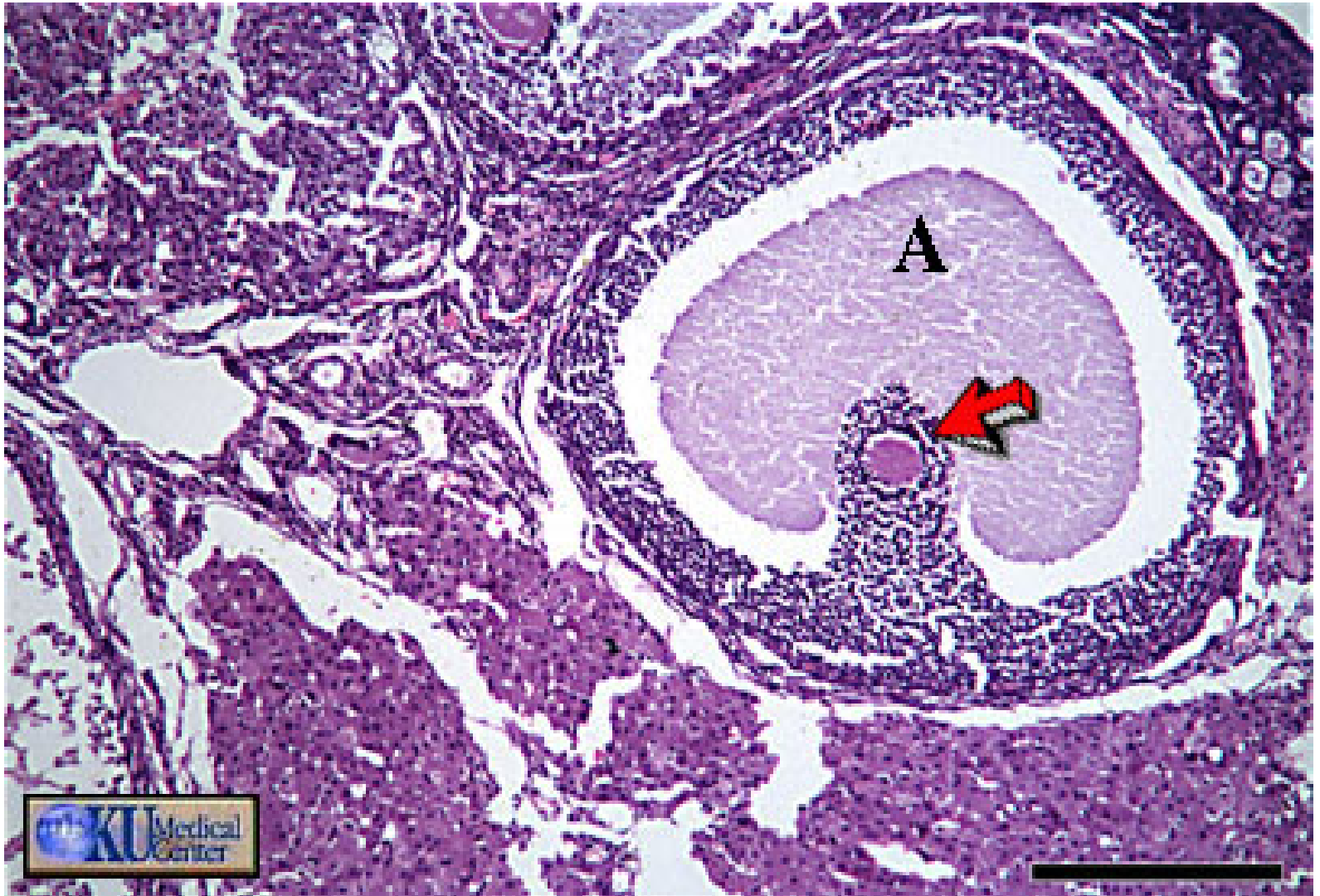


cm |
SPECIMEN ¹ S-3357-83 ⁴ DATE ⁵ 8-15-83 ⁶









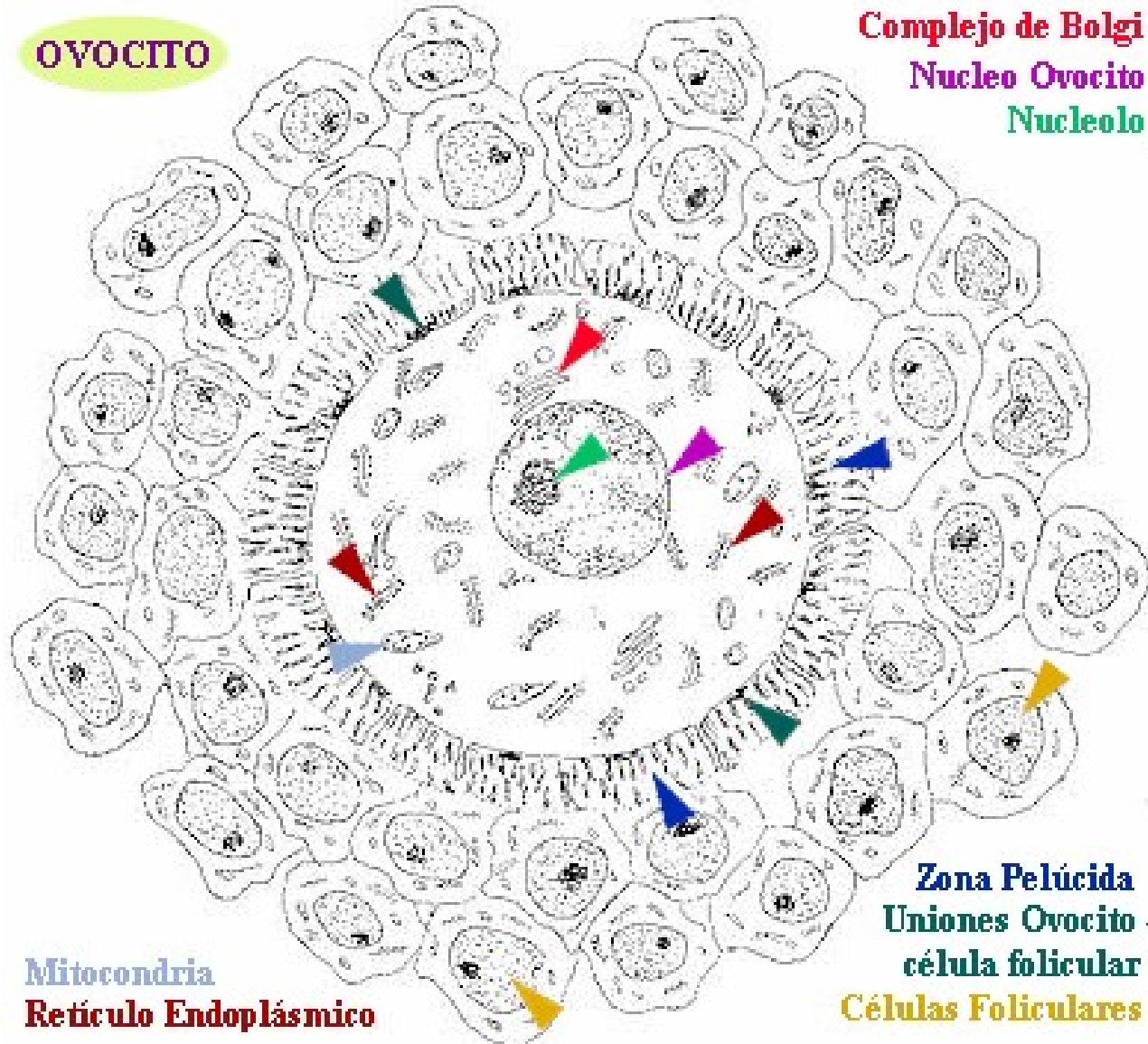
Morfología del ovocito

OVOCITO

Complejo de Golgi

Nucleo Ovocito

Nucleolo



Mitocondria

Retículo Endoplásmico

Zona Pelúcida

**Uniones Ovocito -
célula folicular**

Células Foliculares



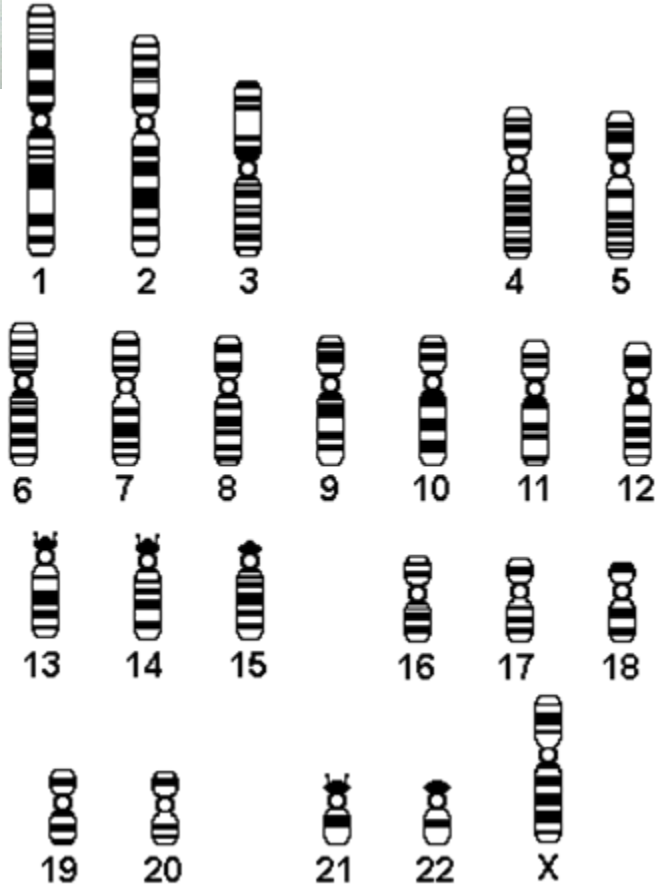
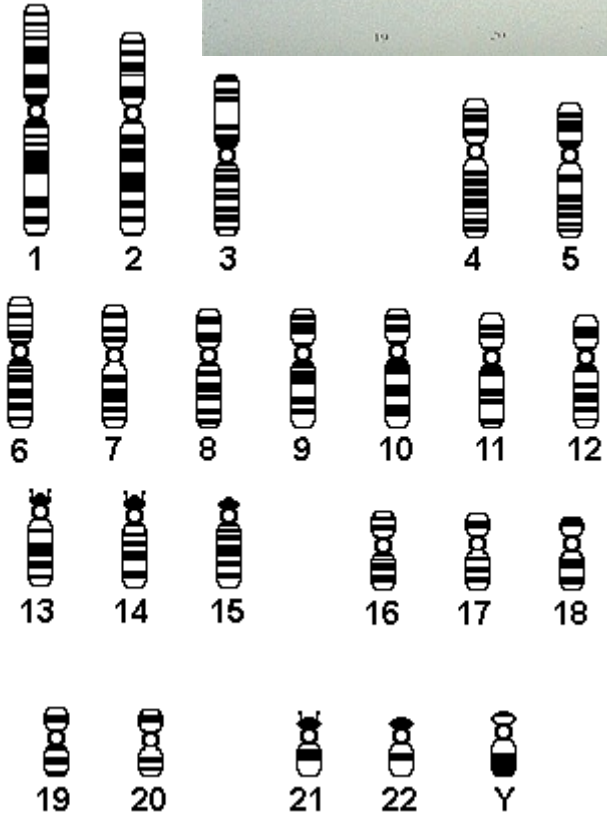


Figura 20-12. Esquema que correlaciona los sucesos en el desarrollo folicular, la ovulación, las interrelaciones hormonales y el ciclo menstrual.

