

GLANDULA MAMARIA

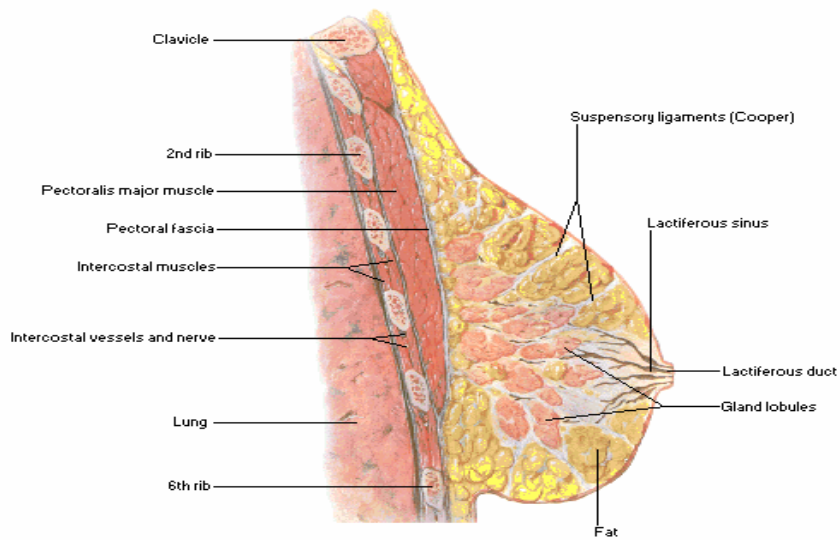
- Amastia.- ausencia de mama
- Atelia.- ausencia de pezón
- Hipermastia o polimastia.- mamas supernumerarias
- Hipertelia o politelia.- varios pezones

Forma, volumen y consistencia.

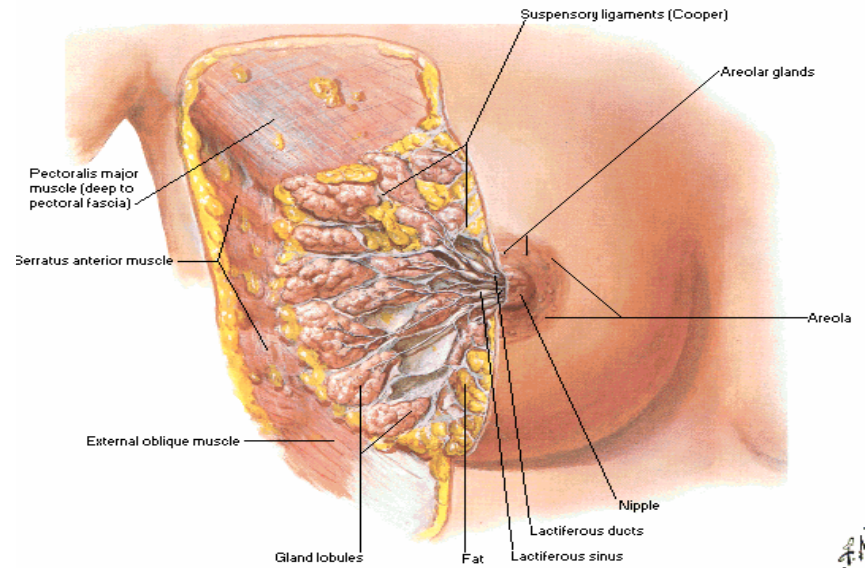


Situación

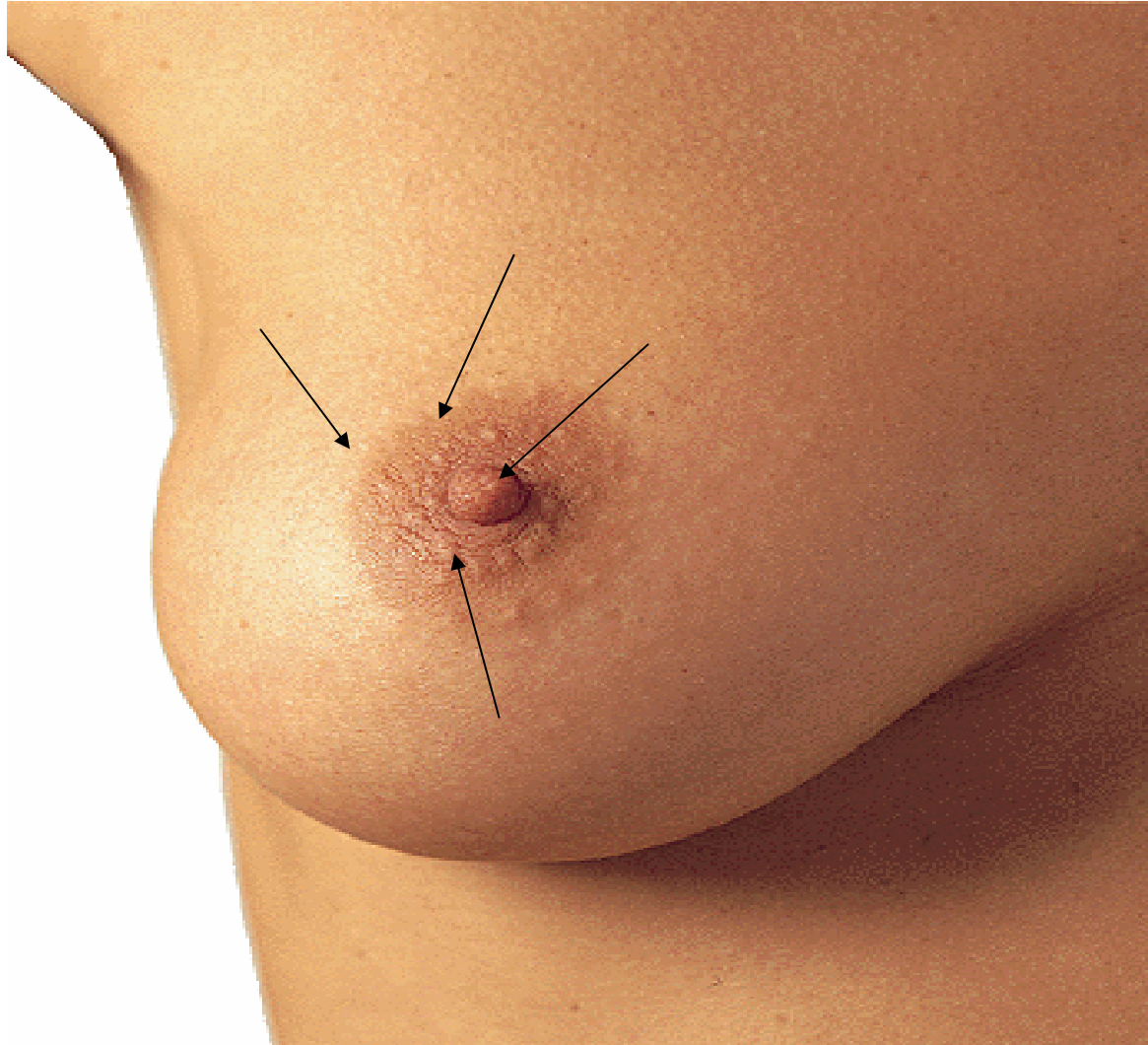
**Mammary Gland
Sagittal Section**



**Mammary Gland
Anterolateral Dissection**

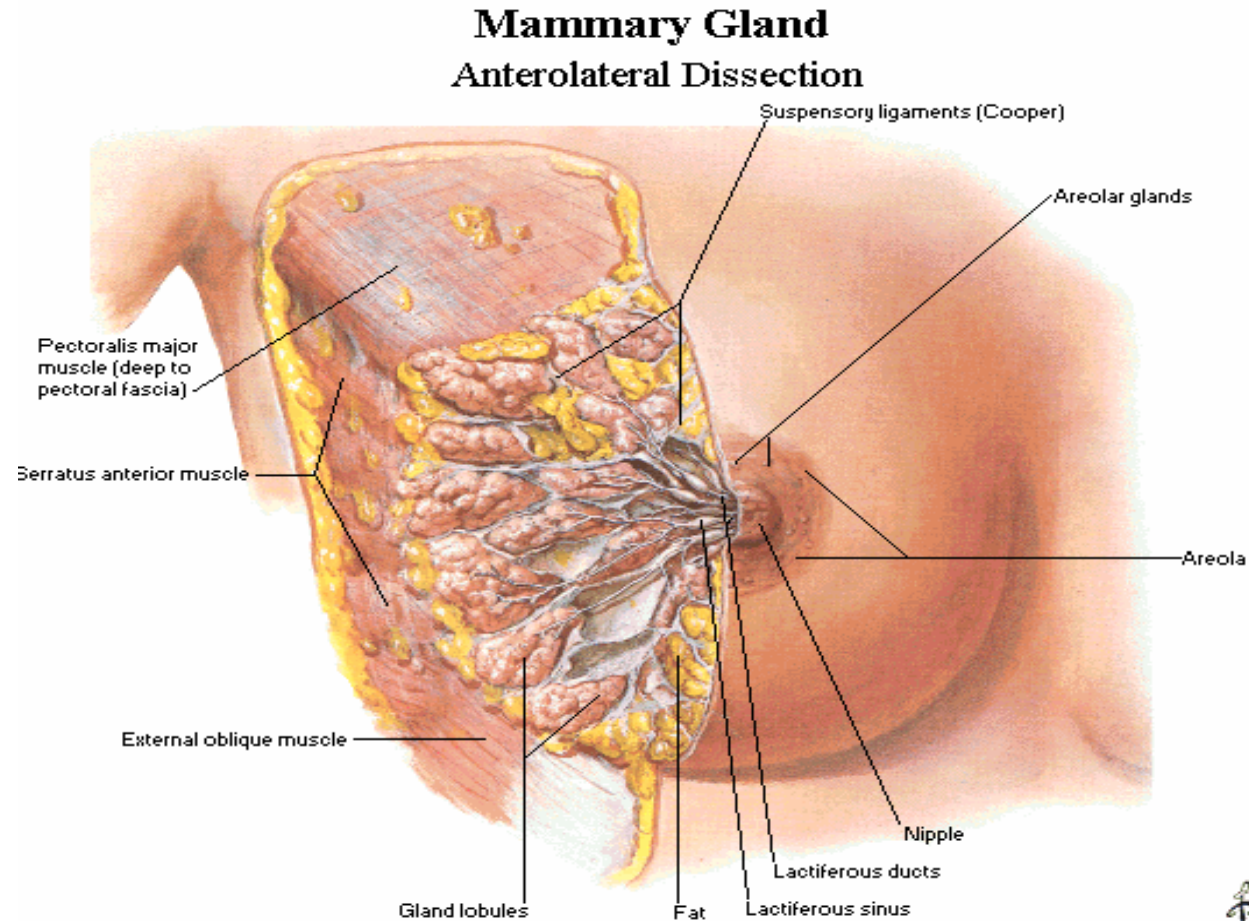


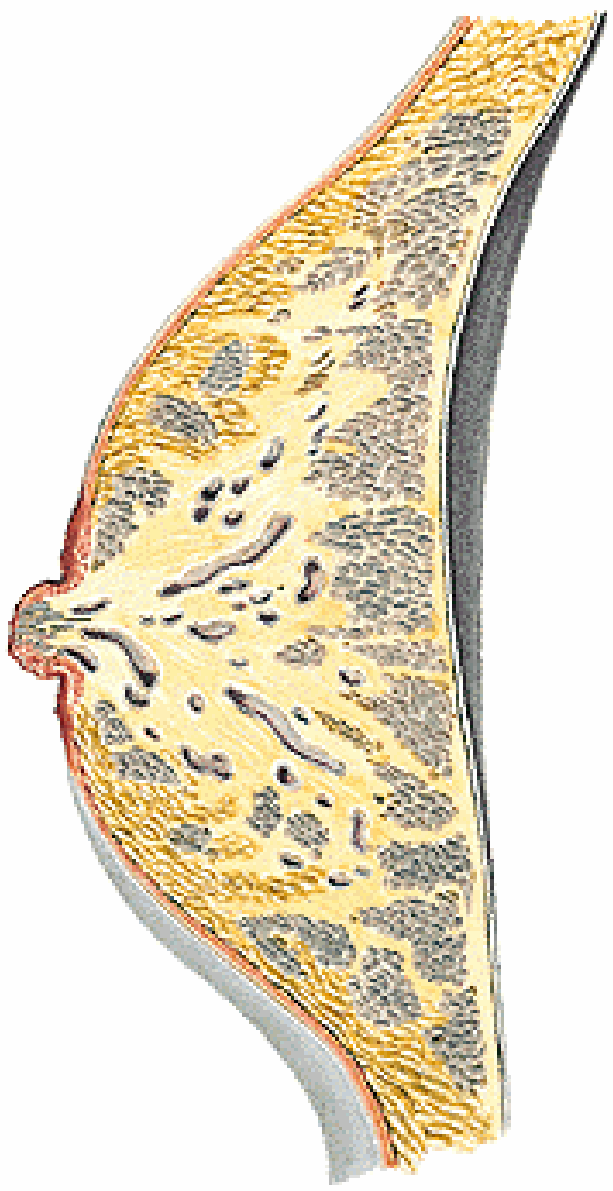
Configuracion exterior



Constitucion anatomica

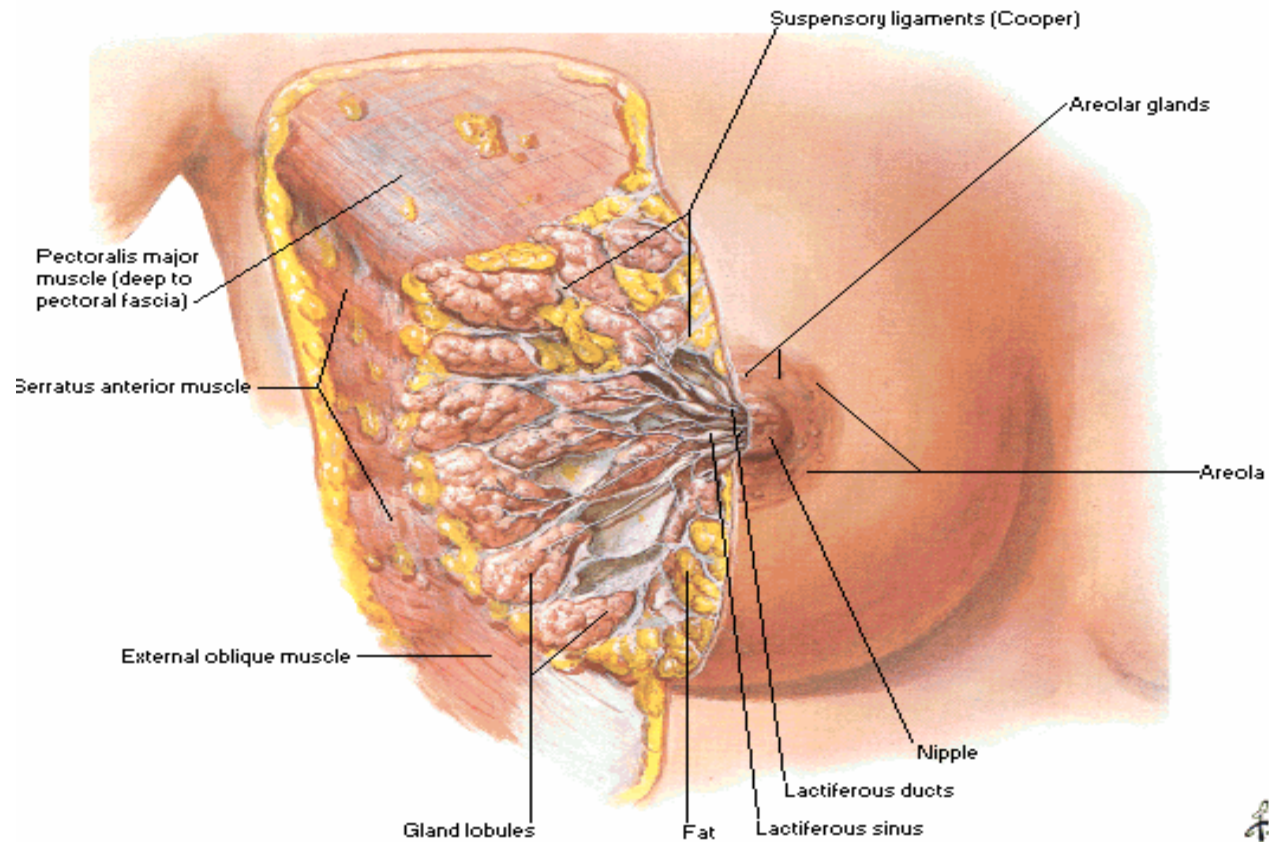
- Glandula mamaria propiamente dicha
- Envoltura cutanea
- Envoltura celuloadiposa





Conductos excretores

Mammary Gland Anterolateral Dissection



Envoltura cutanea zona mamilar y areolar

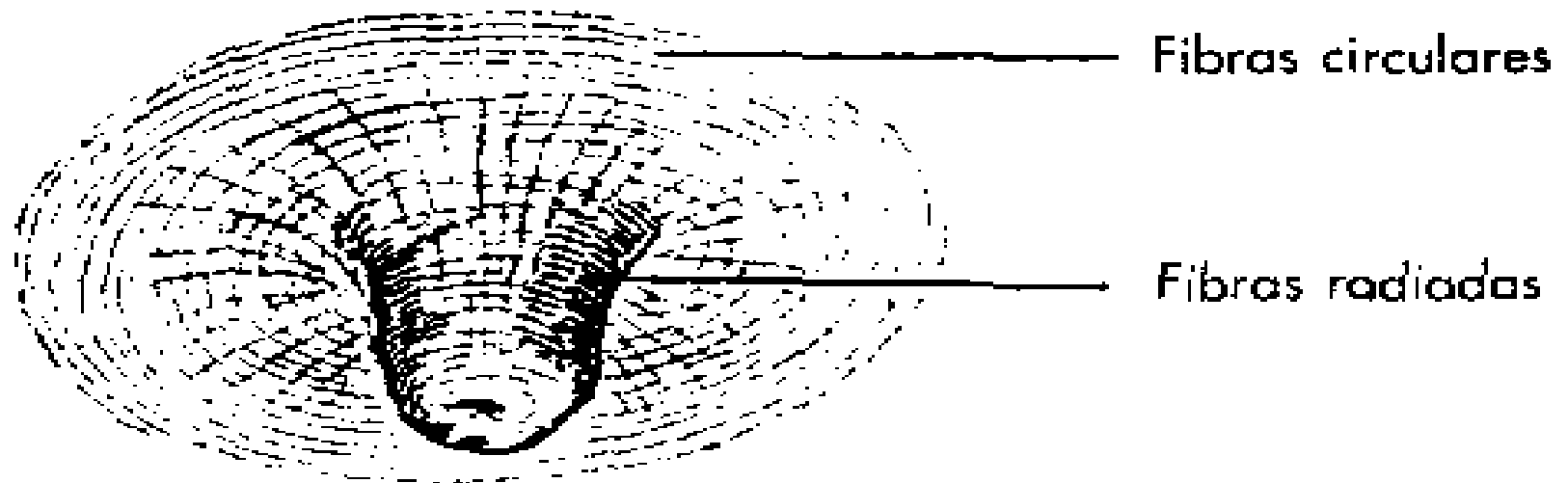
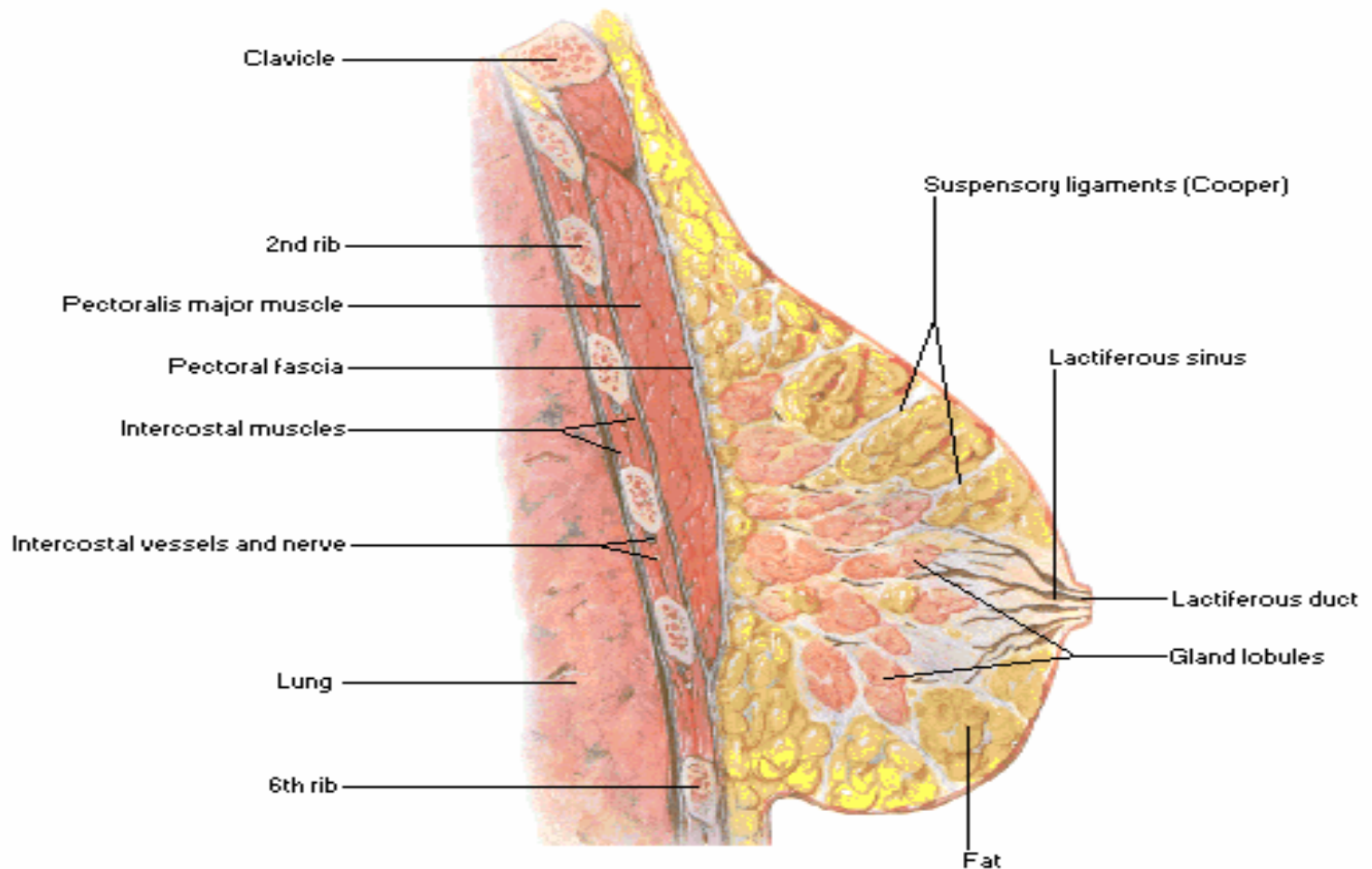


Fig. 212. *Músculo areolar.* (Según Charpy.).

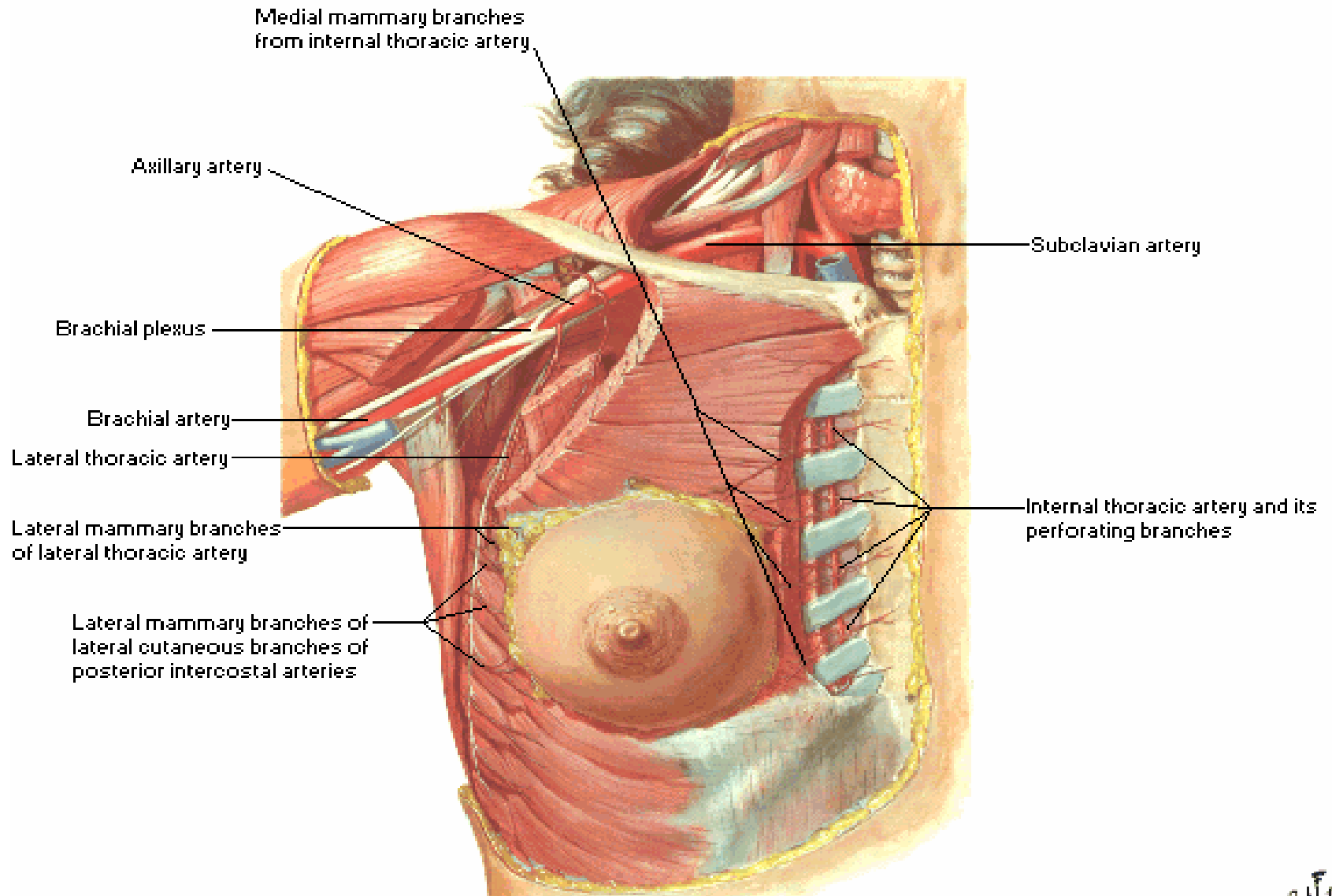
Envoltura celuloadiposa

Mammary Gland

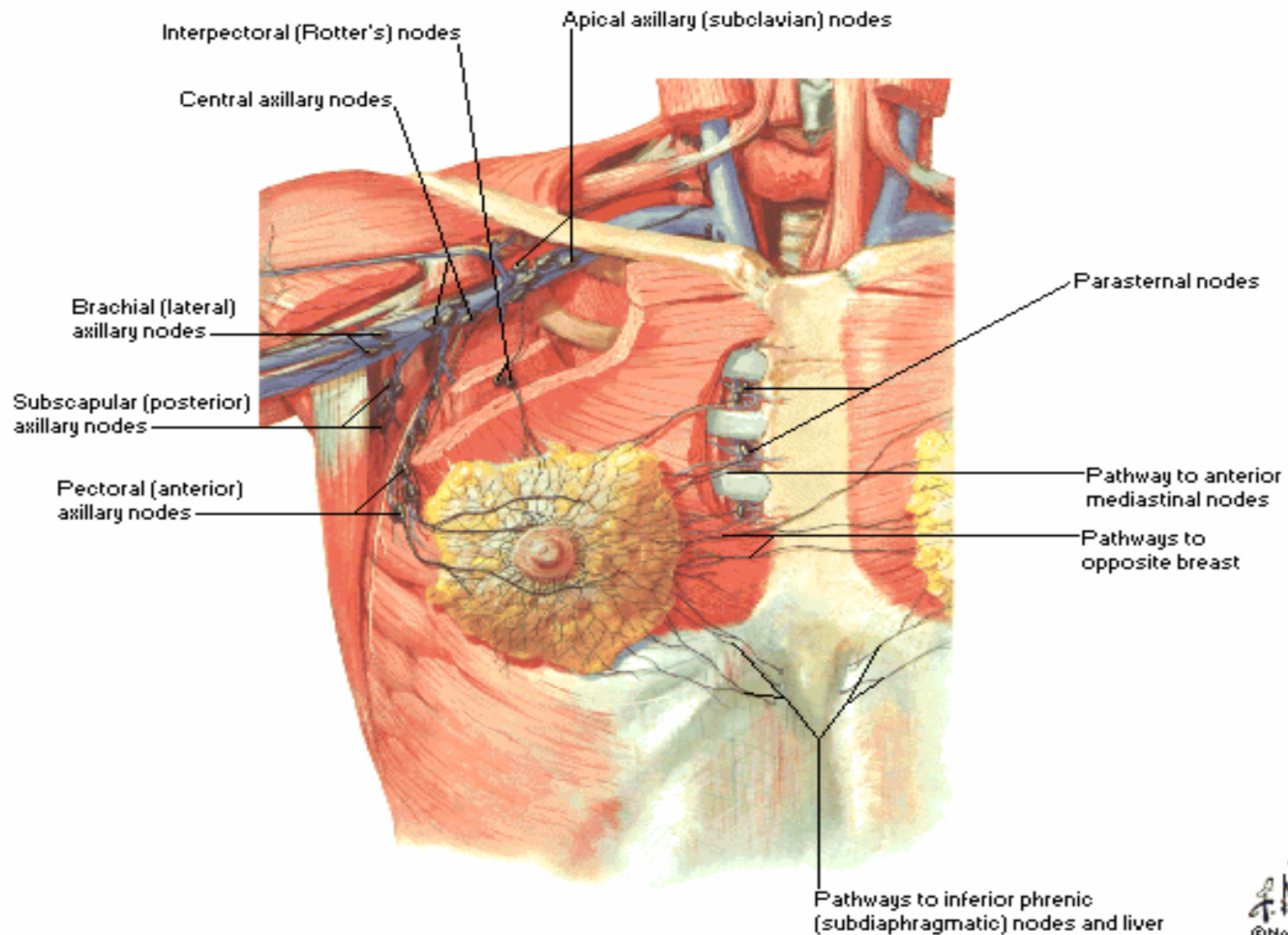
Sagittal Section

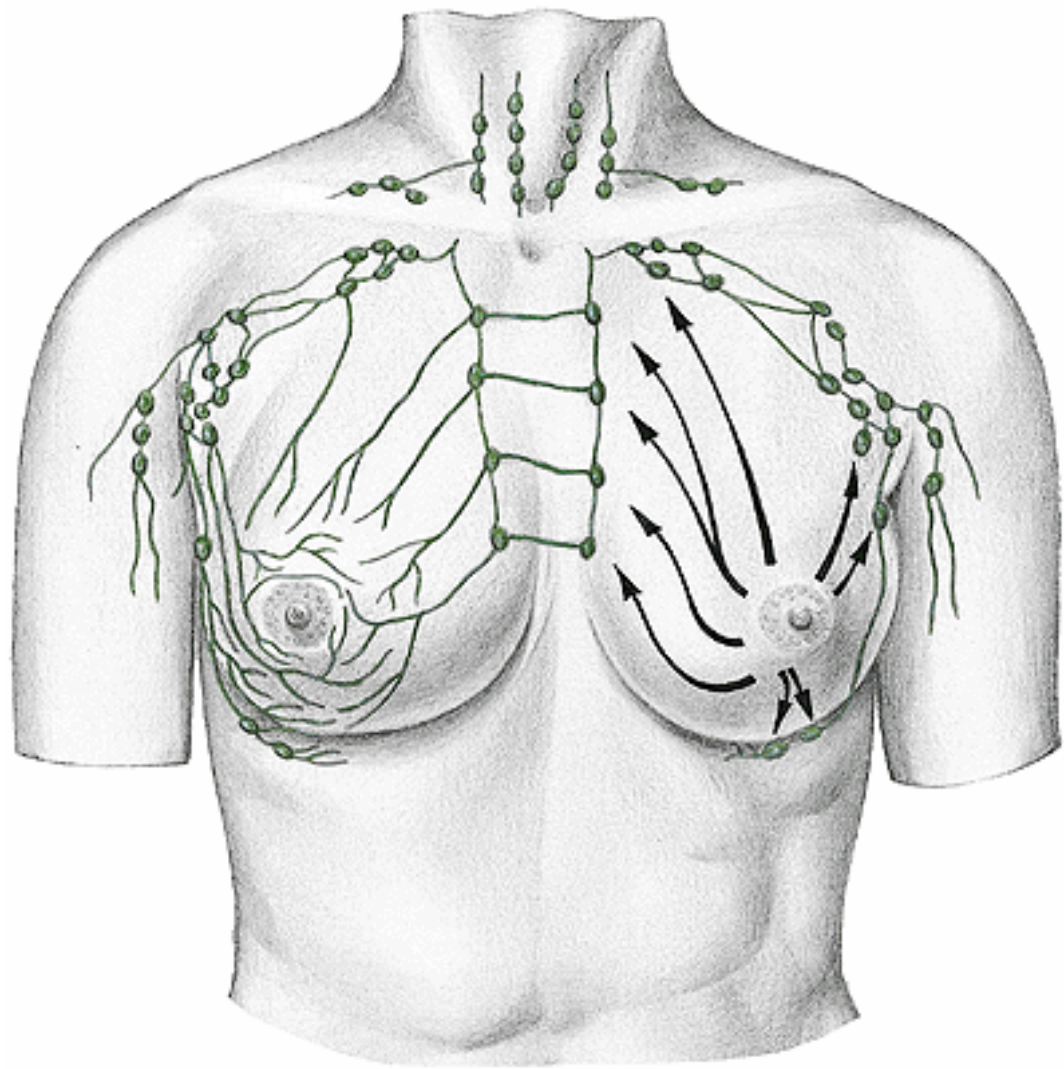


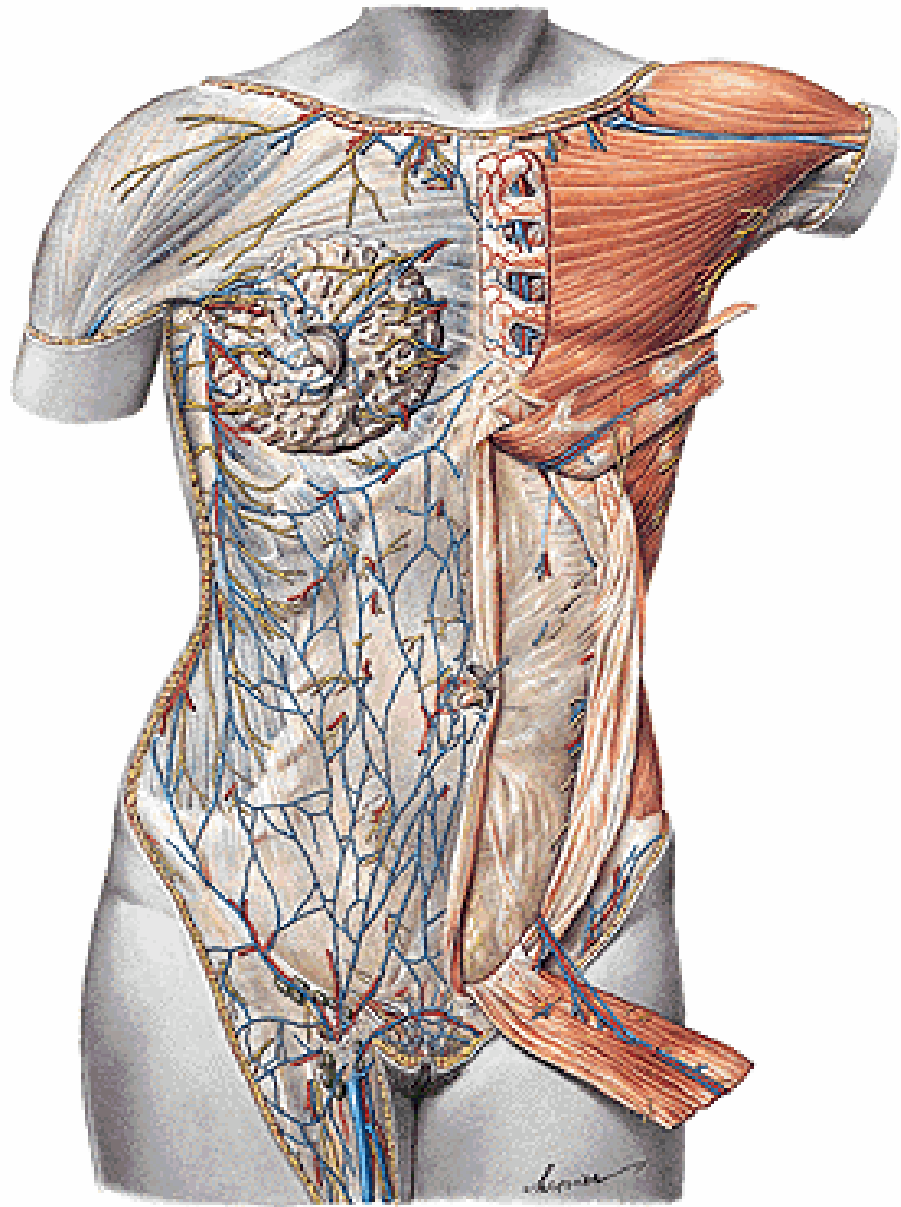
Arteries of Mammary Gland



Lymph Vessels and Nodes of Mammary Gland

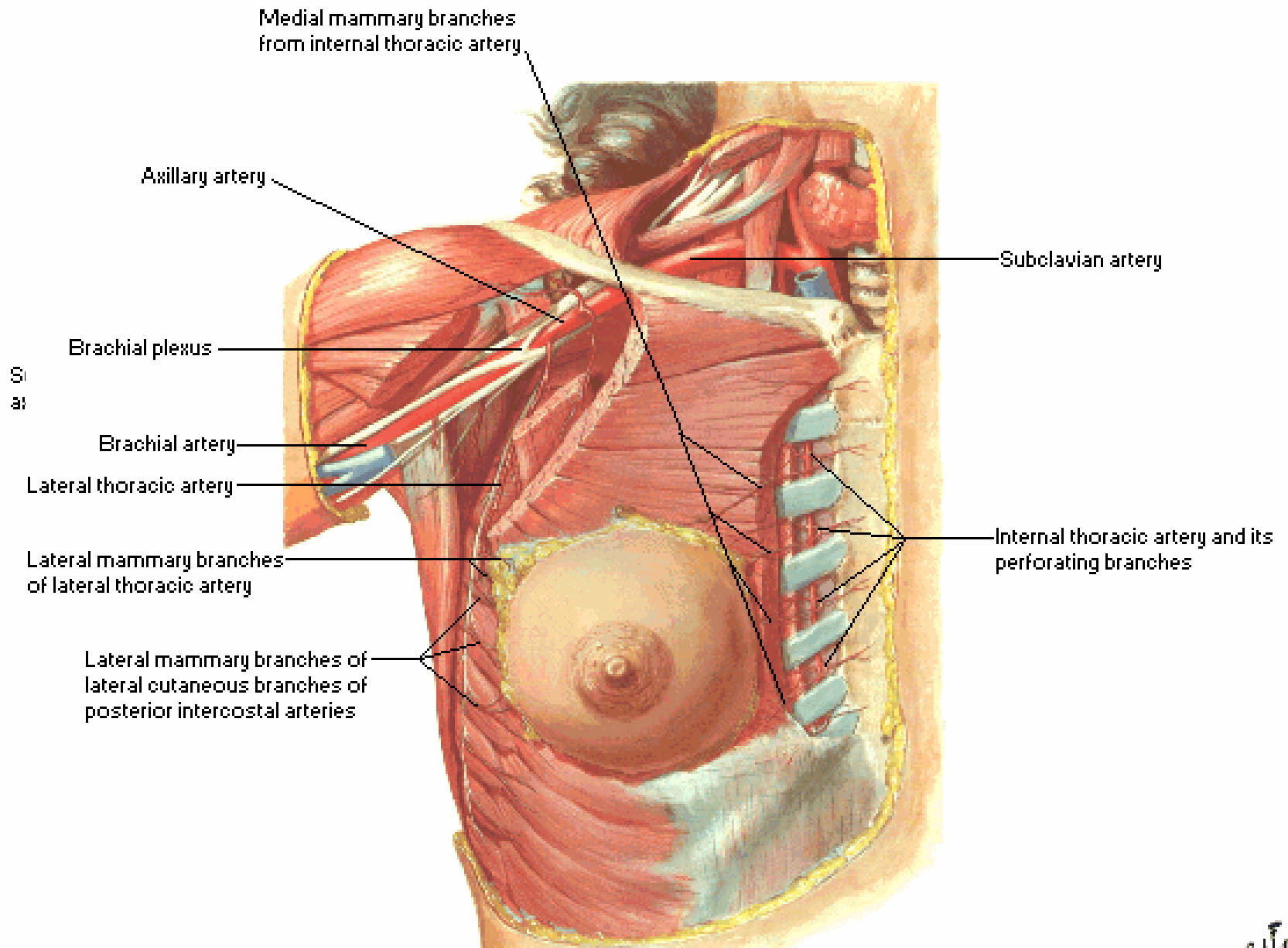






Lymph Vessels and Nodes of Mammary Gland

Arteries of Mammary Gland



CANCER DE MAMA

